



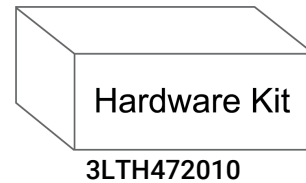
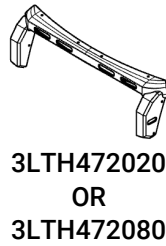
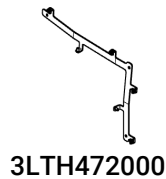
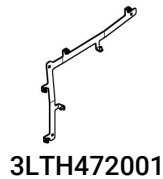
INSTALLATION GUIDE

**2020 - CURRENT
FORD POLICE INTERCEPTOR UTILITY
COMMAND GRILLE®**

Pro-gardTM
PRODUCTS LLC.

STRONG. RELIABLE. SECURE.

**THESE COMPONENTS ARE REQUIRED
TO INSTALL THE COMMAND GRILLE®**



I. The following tools will be required to complete the installation

- A. 1/2" drill bit
- B. 3/32" hex key
- C. 5/32" hex key

II. Read all instructions and refer to the Parts List on the last page to ensure all parts were received.

WARNING: *Locate all wiring, fuel lines, brake lines, coolant lines, and refrigerant lines before drilling any holes or installing any self-drilling fasteners.*

III. Prepare the OEM Grille

- A. Mark the location of each of the (6) dots in Figure 1. The dots are located in the center of their respective diamond.

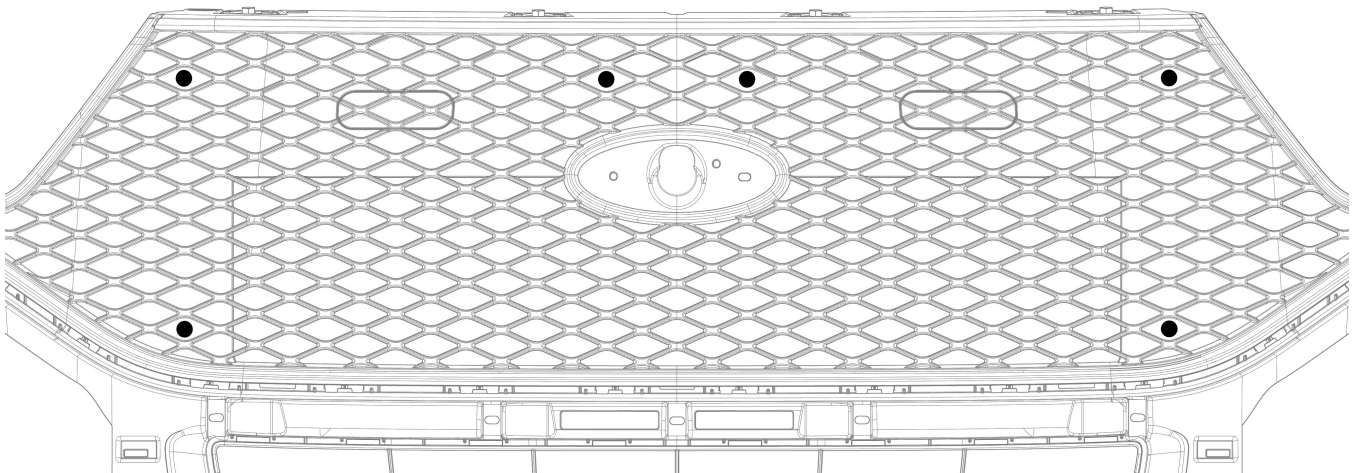


Figure 1

- B. Use a 1/2" drill bit to drill a hole in each of the locations marked in the previous step. The hole in the lower right (when looking at the vehicle) will go through the grille and one layer of an air deflector behind it.
- C. Locate the (6) 1/4-20 well nuts [3X284] from the Hardware Kit [3LTH472010] and insert (1) into each hole drilled in the previous step. The well nut should sit inside each diamond with the top almost flush with the outside surface of the OEM grille.

IV. Mount the Brackets

- A. Align the (3) holes in the Passenger Command Grille® Bracket [3LTH472001] with the (3) well nuts on the left (when looking at the vehicle) side of the OEM grille.
- B. Insert a 1/4-20 X 1" button head fastener [3X283] into each of the holes and hand tighten.
- C. Once all (3) button head fasteners in the Passenger Bracket are started, tighten using a 5/32" hex key.
- D. Repeat Steps A. - C. using the Driver Command Grille® Bracket [3LTH472000] and the remaining (3) button head fasteners [3X283]. Figure 2 shows the OEM grille with the brackets installed.

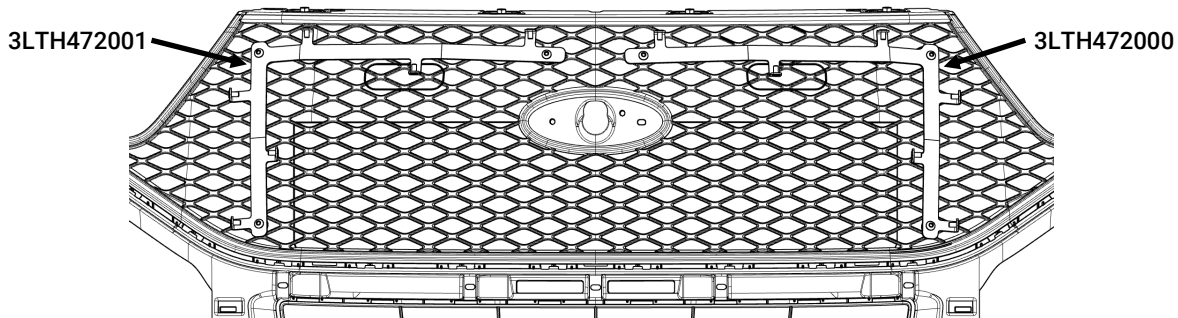


Figure 2

- E. Choose the location where the light wires will be passed through the OEM grille and clear that location. Pro-gard recommends drilling a hole between the ends of the brackets above the Ford emblem; this location allows easy access to the wires behind the OEM grille.

V. Attach the Command Grille®

- A. If installing lights into a Command Grille®, do so now. Be careful not to over torque the light retaining fasteners - the recommended torque is 12 in-lbs.
 - The Command Grille® for Whelen lights [3LTH472020] is designed to work with Whelen Ion T-series lights across the top and Ion mini T-series lights on the sides.
 - The Command Grille® for SoundOff lights [3LTH472080] is designed to work with SoundOff Signal 4" mpower stud mount lights across the top and 3" mpower stud mount lights on the sides.
- B. Wire all of the lights in the Command Grille®.
- C. Prepare the (12) 8-32 X 5/8" button head fasteners [3X624] at the front of the vehicle.
- D. Pass all wiring through the OEM grille and then offer the Command Grille® up to the Brackets. Ensure the Command Grille® is on the outside of all the tabs from the Brackets.
- E. Install the (12) button head screws [3X624] using a 3/32" hex key. There are (8) locations around the outside of the Command Grille® and (4) on the inside (Fig. 3).

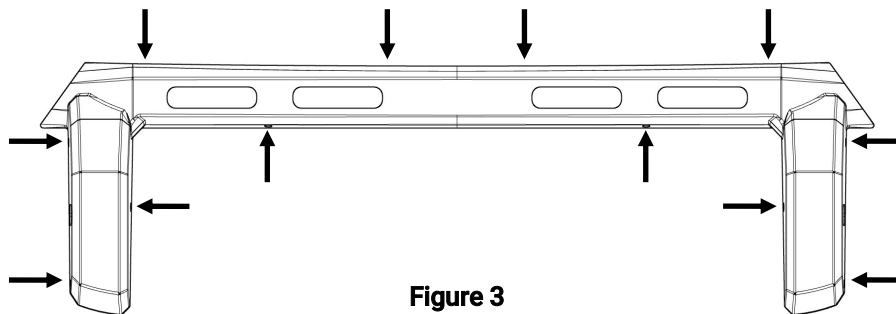


Figure 3

Installation complete

If you have any problems with this installation or have any questions please call (800-480-6680) and ask for technical assistance.

PARTS LIST			
ITEM	QTY	PART NUMBER	REVISION NUMBER DESCRIPTION
1	1	3LTH472020	F COMMAND GRILLE - WHELEN
2	20	3X279	#8 NYLON WASHER 0.040 THICK
3	2	3LTH472004	B WHELEN T-SERIES, SOUND OFF
4	10	3X280	MPOWER FORWARD LIGHT HOLDER
5	2	3LTH472002	C 8-32 NYLOC FLANGE NUT ZINC
6	1	3LTH472010	B SIDE LIGHT HOLDER
6.1	6	3X284	COMMAND GRILLE HARDWARE
6.2	6	3X283	1/4-20 WELL NUT
6.3	12	3X624	1/4-20X1 BHSCS BO SS
7	1	3LTH472000	B 8-32X5/8" BHSCS BO SS
8	1	3LTH472001	B DRIVER ASSEMBLED COMMAND GRILLE BRACKET
			PASSENGER ASSEMBLED COMMAND GRILLE BRACKET

