

INSTALLATION INSTRUCTIONS

SK52I06-S

2006 CHEVY IMPALA

STEEL SKID PLATE



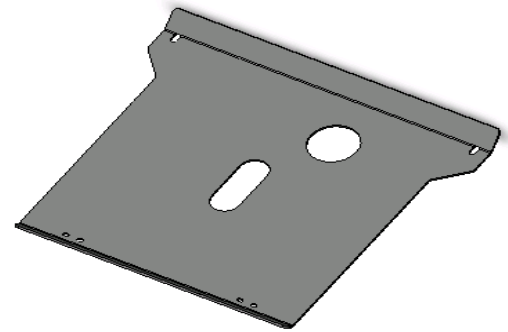
Read all instructions before beginning installation!

Check to ensure all parts from the hardware list are included before beginning installation.

Hardware list:

3SK110-S - Steel Skid Plate
3SK111-S - Steel Passenger Side Bracket
3SK112-S - Steel Driver Side Bracket
3SK113-S - Steel Plates (2)

3X120 - $\frac{3}{8}$ " locknut (6)
3X121 - $\frac{3}{8}$ " flat washer (12)
3X119 - $\frac{3}{8}$ " 1 $\frac{1}{2}$ " bolt (4)
3X164 - $\frac{3}{8}$ " 5 $\frac{1}{2}$ " long bolt (2)
3X163 - $\frac{1}{2}$ " 1 $\frac{1}{2}$ " long bolt (2)
3X165 - $\frac{1}{2}$ " locknut (2)
3X173 - $\frac{1}{2}$ " plastic washer (2)
3X508 - $\frac{1}{2}$ " flat washer (4)



3SK110-S STEEL
SKID PLATE



3SK111-S
STEEL
PASSENGER
SIDE BRACKET



3SK112-S
STEEL
DRIVER
SIDE BRACKET



3SK113-S
STEEL
PLATE

I. You will need the following tools to complete this installation:

drill and 17/32" diameter drill bit for 1/2" fasteners
9/16" wrench and socket
3/4" wrench and socket

II. Installing the skid plate

Do not tighten the bolts until installation is completed.

1. Using the 5 1/2" bolts provided, clamp the 3SK112-S Driver Side Bracket and the 3SK113-S onto each side of the space in the aluminum frame, located to the rear of the engine. See Photo 1. The 3SK112-S bracket should be attached on the inner part of the aluminum frame. The 3SK113-S plate should be attached on the aluminum frame closest to the outside of the vehicle. Use two 3/8" washers and one 3/8" locknut for each 5 1/2" bolt to loosely secure.



PHOTO 1

2. Orient the 3SK112-S bracket towards the inside of the car so the holes are facing down as shown in Photo 2. These holes are used to mount the skid plate. Attach and orient the 3SK113-S plate on the opposite side of the aluminum frame, near the outside of the car as shown in photo 3.



PHOTO 2



PHOTO 3

3. Attach the 3SK111-S passenger side bracket and the other 3SK113-S plate using the same procedure as for the driver side.
4. Make sure the holes in the 3SK111-S and 3SK112-S brackets are properly oriented and the holes are facing down.
5. Lay the skid plate under the car. Lift the rear of the skid plate up to the corresponding brackets and align the holes.
6. Attach the skid plate using two $\frac{3}{8}$ " washers and one $\frac{3}{8}$ " locknut per $\frac{3}{8}$ " bolt, for each side of the skid plate. See Photo 4.

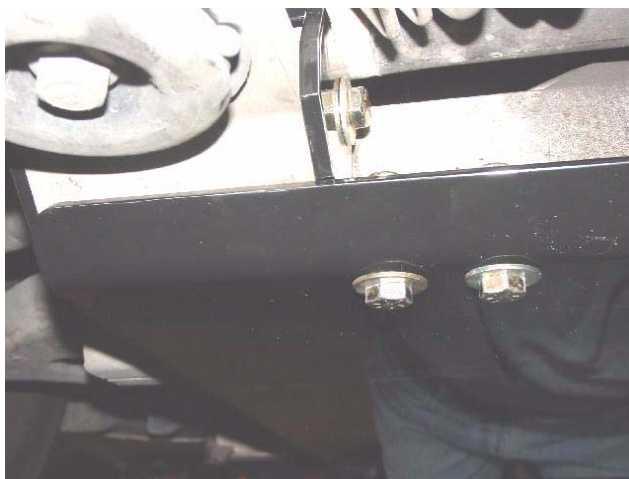


PHOTO 4

7. Raise the front of the skid plate up to the sub-frame of the vehicle. Using the front skid plate holes as a template, mark the 2 hole locations. Lower the skid plate and drill clearance holes for $\frac{1}{2}$ " bolts through the aluminum sub-frame.

8. Place a 3X173 plastic washer over each hole on the top side of the skid plate and swing the skid plate up to the sub-frame. (silicone sealer or grease maybe used to help hold the plastic washer in place) From below, insert a ½” bolt with steel washer through the skid plate, plastic washer and sub-frame at each side. Secure with a steel washer and lock nut on top. See Photos 5 and 6.



PHOTO 5



PHOTO 6

- III. When all hardware is attached and the skid plate is installed correctly, go back and tighten all bolts. See Photo 7.



PHOTO 7

IF THERE ARE ANY QUESTIONS OR CONCERNS PLEASE CONTACT:

PRO-GARD PRODUCTS LLC
Phone: 317-579-6680
Fax: 317-579-6681