

INSTALLATION INSTRUCTIONS
SK52I06
2006-2008 CHEVY IMPALA
ALUMINUM SKID PLATE



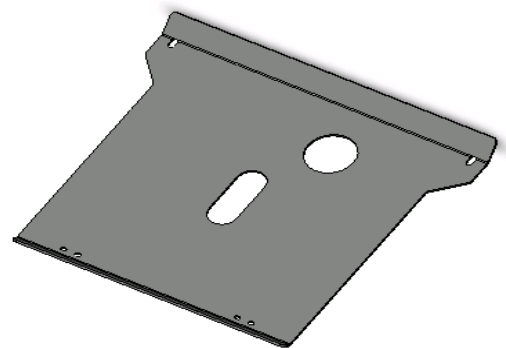
Read all instructions before beginning installation!

Check to ensure all parts from the hardware list are included before beginning installation.

I. Hardware list:

3SK110- Skid Plate
3SK111 - Passenger Side Bracket
3SK112 - Driver Side Bracket
3SK113 - Plates (2)

3X120 - 3/8" locknuts (6)
3X121 - 3/8" flat washers (12)
3X119 - 3/8" full thread bolts (4)
3X164 - 3/8" 5 1/2" long bolts (2)
3X163 - 1/2" 1 1/2" long bolts (2)
3X165 - 1/2" locknuts (2)
3X508 - 1/2" flat washers (4)



3SK110- ALUMINUM
SKID PLATE



PHOTO 1
3SK111-
ALUMINUM
PASSENGER
SIDE BRACKET



PHOTO 2
3SK112-
ALUMINUM
DRIVER
SIDE BRACKET



PHOTO 3
3SK113-
ALUMINUM
PLATE

II. You will need the following tools to complete this installation:

drill with 1/2" drill bit
3/4" wrench and socket
9/16" wrench and socket

III. Installing the skid plate

Do not tighten the bolts until installation is completed.

1. Using the 5 1/2" bolts provided, clamp the 3SK112 Driver Side Bracket and the 3SK113 onto each side of the space in the aluminum frame, located to the rear of the engine. See Photo 4. The 3SK112 bracket should be attached on the inner part of the aluminum frame. The 3SK113 plate should be attached on the aluminum frame closest to the outside of the vehicle. Use two 3/8" washers and one 3/8" locknut for each 5 1/2" bolt to loosely secure.



PHOTO 4

2. Orient the 3SK112 bracket towards the inside of the car so the holes are facing down as shown in photo 5. These holes are used to mount the skid plate. Attach and orient the 3SK113 plate on the opposite side of the aluminum frame, near the outside of the car as shown in photo 6.



Photo 5



Photo 6

3. Attach the 3SK111 passenger side bracket and the other 3SK113 plate using the same procedure as for the driver side.
4. Make sure the holes in the 3SK111 and 3SK112 brackets are properly oriented and the holes are facing down.
5. Lay the skid plate under the car. Lift the rear of the skid plate up to the corresponding brackets and align the holes.
6. Attach the skid plate using two 3/8" washers and one 3/8" locknut per 3/8" bolt, for each side of the skid plate. See Photo 7.

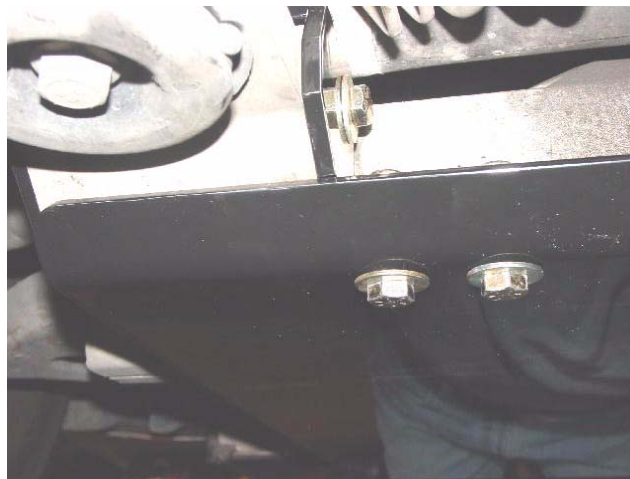


PHOTO 7

7. Raise the front of the skid plate up to the frame of the vehicle. Using the front skid plate holes as a template, drill a 1/2" diameter hole on each side of the vehicle frame.

8. Attach the front of the skid plate using one 1/2" bolt, two 1/2" washers, and one 1/2" nut for each side of the skid plate. See Photos 8 and 9.



PHOTO 8



PHOTO 9

9. When all hardware is attached and the skid plate is installed correctly, go back and tighten all bolts. See Photo 10.



PHOTO 10

IF THERE ARE ANY QUESTIONS OR CONCERNS PLEASE CONTACT:

PRO-GARD PRODUCTS LLC

Phone: 317-579-6680

Fax: 317-579-6681