

## **INSTALLATION GUIDE**

**LEVEL IIIA BALLISTIC DOOR PANEL**

**BDP36INT13-IIIA**

**2013 - CURRENT**

**FORD POLICE INTERCEPTOR**

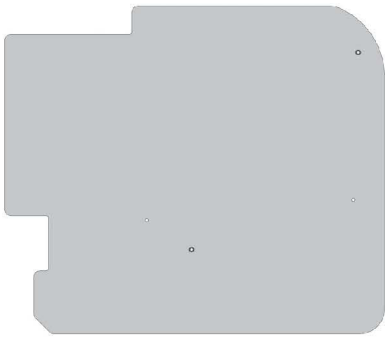
**Pro-gard**<sup>™</sup>  
PRODUCTS LLC.

**STRONG | RELIABLE | SECURE**

**pro-gard.com**  
**800.480.6680**

# Ballistic Door Panel *Installation Manual*

Vehicle: Ford Interceptor Sedan - NIJ Level IIIA

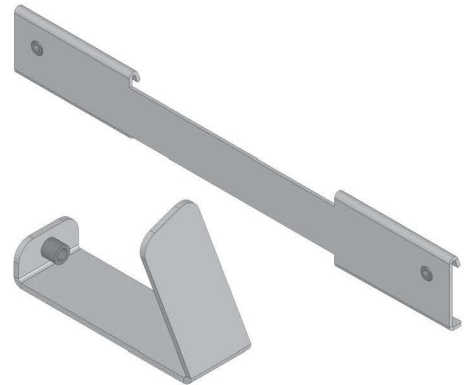


REAR ————— FRONT

Door Panel



Hardware

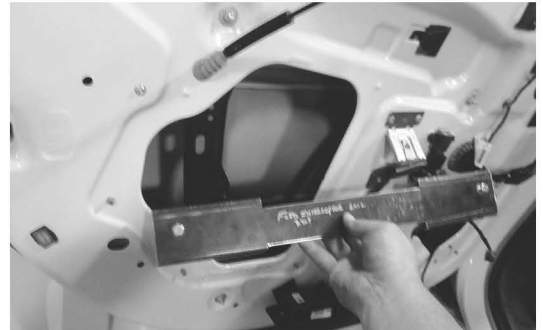


Brackets

- 1 Remove door trim and molding, ensuring all required electrical systems are disconnected from the door insert.



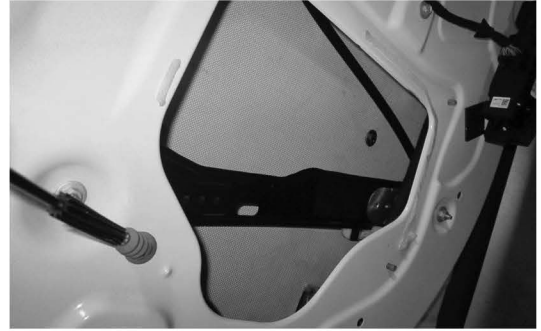
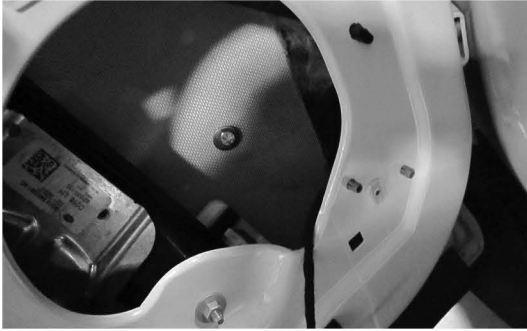
- 2 Install long bracket and slide the panel through the window opening at the top of the door.



# Ballistic Door Panel *Installation Manual*

Vehicle: Ford Interceptor NIJ Level IIIA

- 3** Mount the panel using the provided hardware.



- 4** Install the U bracket using the factory holes.



- 5** Reinstall window track and window & test window movement up and down.

- 6** Reinstall Door Panel.