

INSTALLATION GUIDE

B6702D18 & B6705D18

CARGO BARRIER

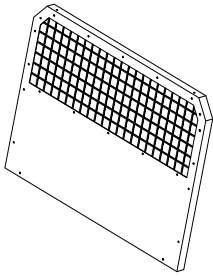
'2018 - CURRENT

DODGE DURANGO

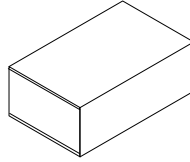
Pro-gard[™]
PRODUCTS LLC.

STRONG. RELIABLE. SECURE.

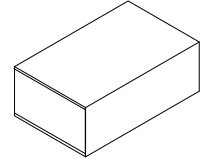
**THESE COMPONENTS ARE REQUIRED
TO INSTALL THE PARTITION**



4B6702D18 (POLY)
4B6705D18 (WIRE)
(Varies by order)



4BK6718 DUR BARRIER KIT



4BWK67D18 DUR BARRIER
WING KIT

I. The following tools will be required to complete the installation.

- A. 3/8" drive ratchet with 13mm socket
- B. 3/8" drive ratchet with 15mm (deep) socket
- C. 7/16" wrench or 3/8" drive ratchet with 7/16" socket

II. Read all instructions carefully and refer to the diagram on the last page of these instructions to ensure all parts were received.

WARNING: *Locate All wiring, fuel lines, brake lines, coolant lines, or refrigerant lines before drilling any holes or installing any self-drilling fasteners.*

III. Remove cargo compartment covers.

- A. Remove cargo compartment covers (See Fig. 1)



FIG. 1
Cargo compartment covers

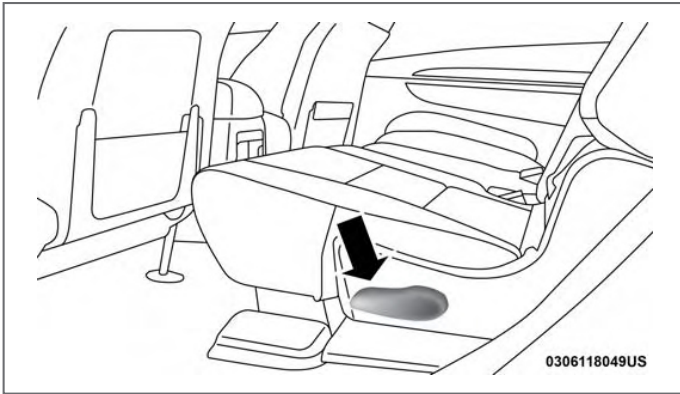


FIG. 2a Release Lever

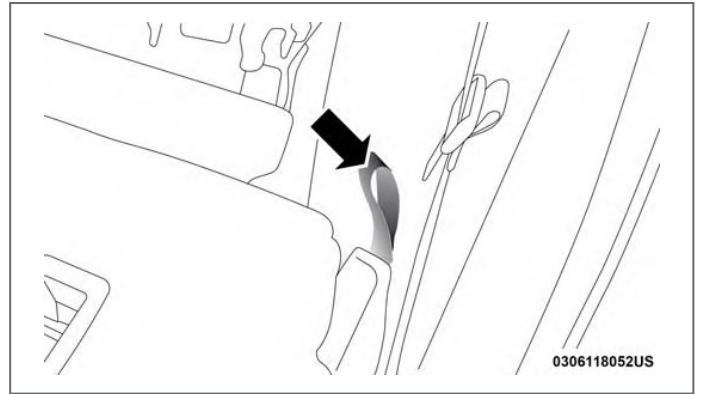


FIG. 2b Tumble strap

B. Fold rear seat back down and tumble seat assembly forward by pulling the release lever, then using the tumble strap behind seat back. (See Fig. 2a, 2b & 2c)



FIG. 2c

C. Remove the spare tire.

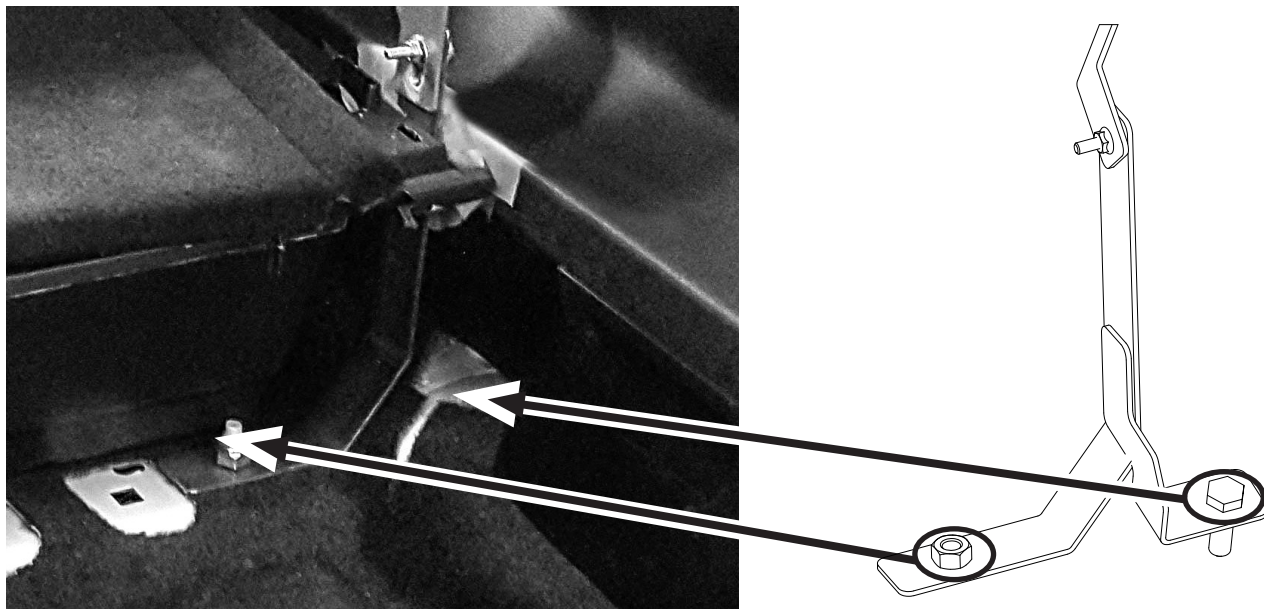
D. Remove cargo compartments.
(See Fig. 3)



FIG. 3

IV. Install rear mounting brackets on both sides (See Fig. 4)

- A. Bolt (3x181) fastened at cargo area threaded hole.
- B. Thread nut (3x182) over the floor stud.
- C. Return compartments and load floor panels.



V. Install barrier (See Fig. 5a & 5b)

A. Place and center barrier using interior trim as guide. (See Fig. 5a)

B. Barrier corner will be practically tangent to cargo trim. (See Fig. 5b)

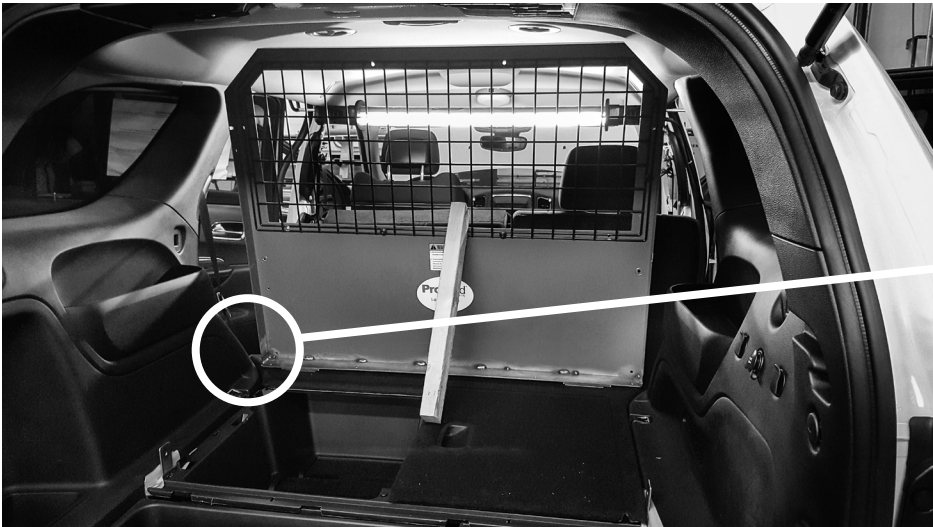


FIG. 5a

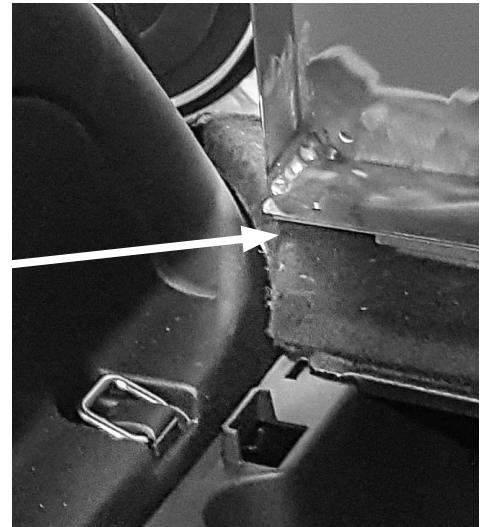


FIG. 5b

C. For both driver and passenger sides, loosely fasten barrier support bracket 3B6718-09 to barrier and rear bracket. (See Fig. 6)

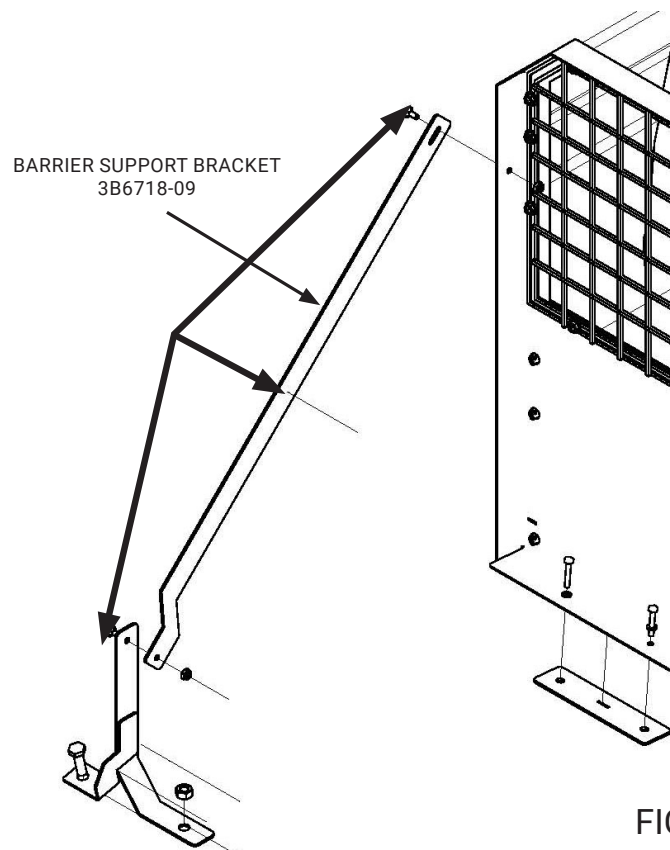
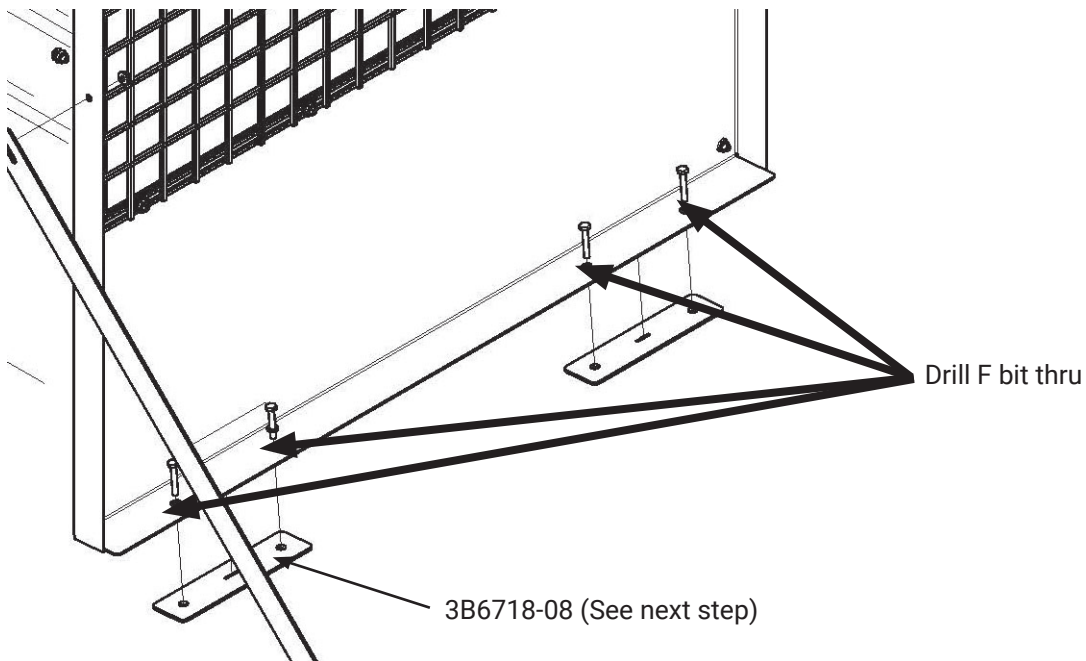
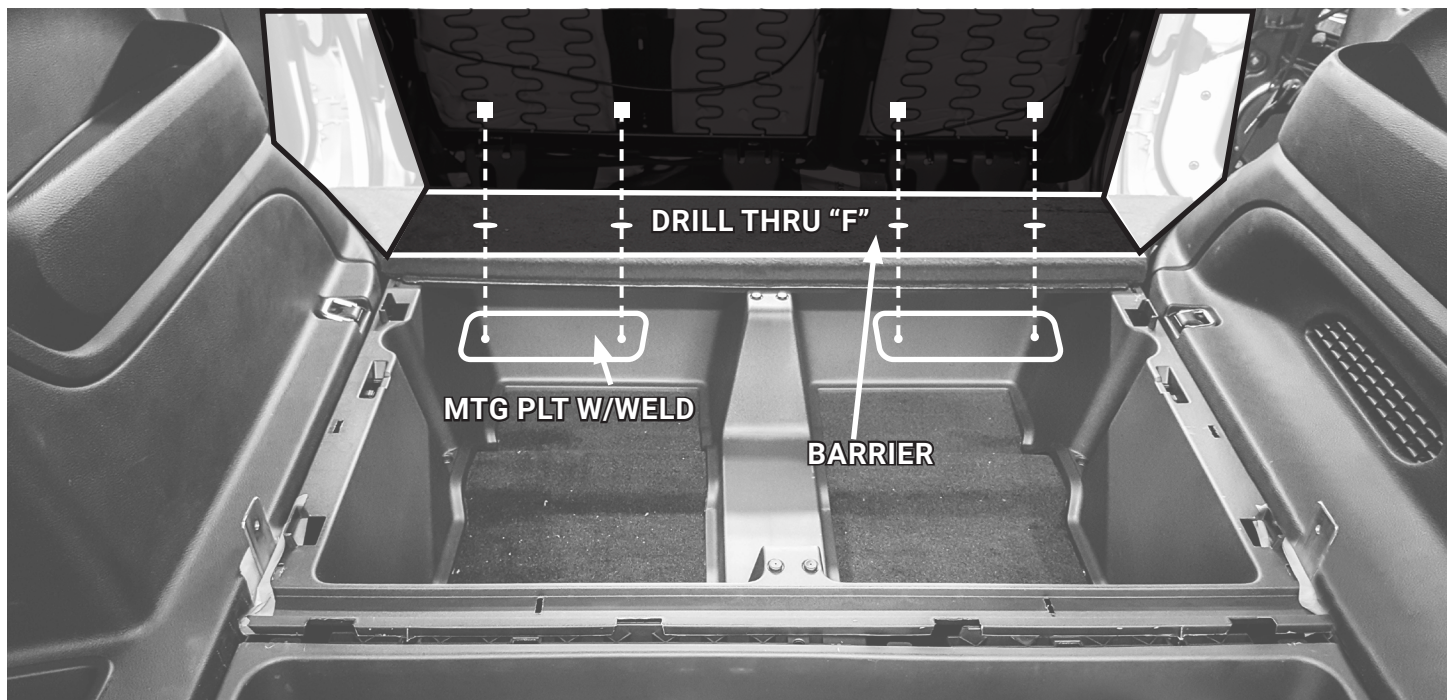


FIG. 6

- D. Once barrier is located, transfer drill holes with "F" bit at these hole locations thru cargo floor.
(See Fig. 7)



- E. Locate barrier mounting plate 3B6718-08 at underside of floor and thread in 1/4-20 bolts (3x39) with lock washer 3x49 as shown. (See Fig. 8)



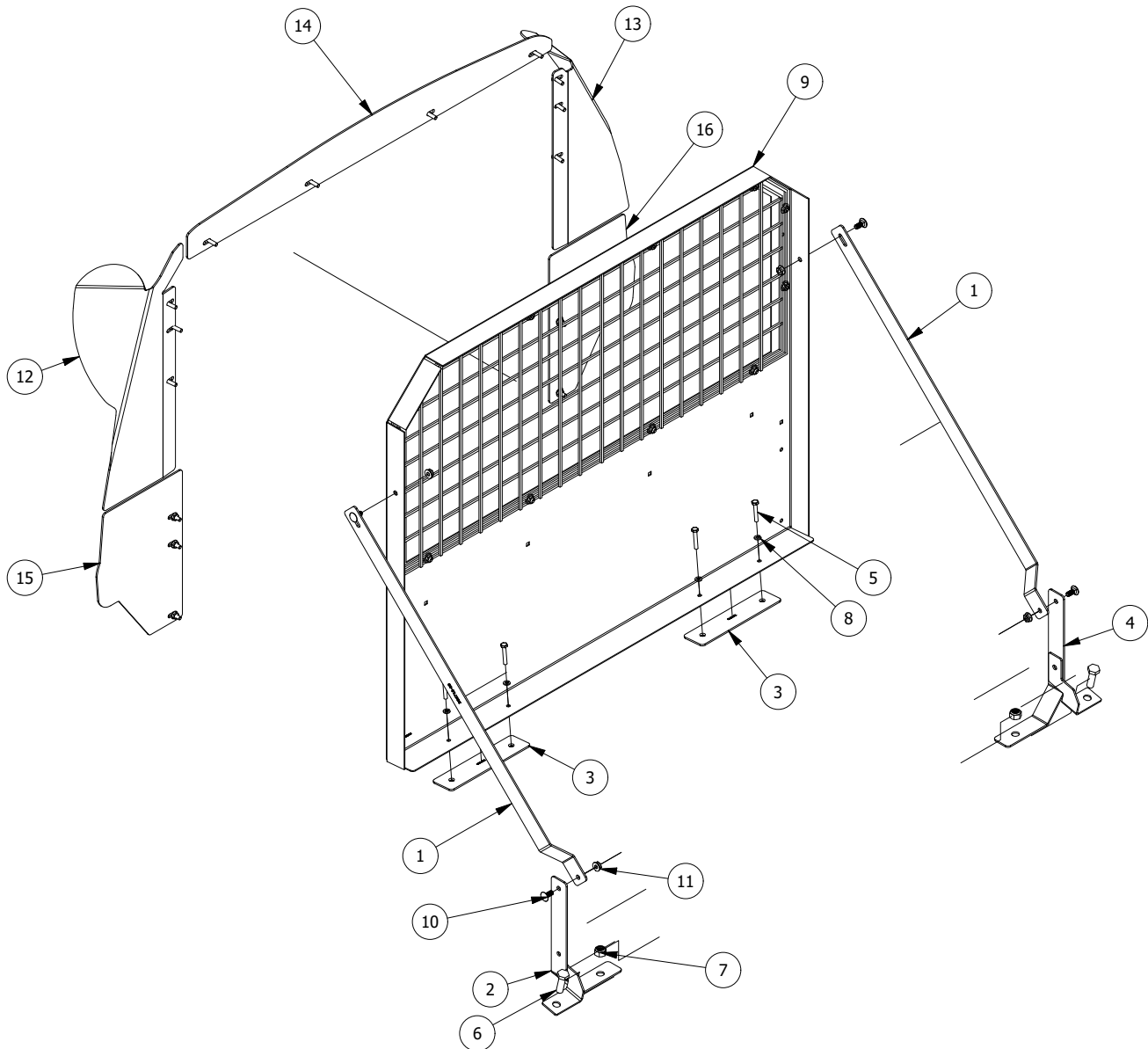
VI. Install Filler Wings

- A. Install the upper wings directly to the barrier with the supplied bolts (3X05A) and nuts (3X16).
- B. OEM Seats: Place the Filler Wing Assemblies against the front side of the Barrier.
Fasten the assemblies using the supplied bolts (3X05A) and nuts (3X16).
Ensure that the Filler Wings can flex forward in the event of a crash.
- C. Transport Seat: When installing the transport seat, ensure filler wings are installed on top of the seat, in front of the seat support bracket, to allow proper flex for airbag compliance and prevention of prisoner access into the cargo area.

NOTE: *Installation of the Filler Wings according to these instructions is critical in their ability to function properly in the event of Side Air Bag deployment.*

VII. Audit overall installation, insure that all fasteners are tight

PARTS LIST			
ITEM	QTY	PART NUMBER	DESCRIPTION
1	2	3B6718-09	BARRIER SUPPORT BRACKET
2	1	3B6718-10D	BARRIER REAR MOUNT BRACKET, DS
3	2	3B6718-08	BARRIER MOUNTING PLATE
4	1	3B6718-10P	BARRIER REAR MOUNT BRACKET, PS
5	4	3X39	1/4-20 X 1.5" HEX HEAD BOLT ZINC
6	2	3X181	M12x1.75x40 HEX BOLT, 10.9, ZC
7	2	3X182	M12X1.75 NYLON LOCK NUT
8	4	3X49	1/4" SPLIT LOCK WASHER, ZINC
9	1	4B6705D18	BARRIER SMALL W/WIRE SCREEN
10	4	3X144	5/16-18 X 3/4" CARR BOLT ZINC
11	4	3X166	5/16-18 LARGE HEX WHIZ NUT-ZINC
12	1	3WIN672100	DRIVER UPPER WING
13	1	3WIN672101	PASSENGER UPPER WING
14	1	3BW6718-03	CENTER UPPER WING
15	1	3BP6718-01P	DRIVER LOWER WING
16	1	3BW6718-01D	PASSENGER LOWER WING



PARTS LIST				
ITEM	QTY	PART NUMBER	REVISION NUMBER	DESCRIPTION
1	1	3BW6718-03	A	BARRIER HEADLINER WING
2	1	3BW6718-01P	C	BARRIER WING, LOWER PS DUR 18 AB
3	1	3BW6718-01D	C	BARRIER WING, LOWER DS DUR 18 AB
4	1	3WIN672100	A	BARRIER WING, UPPER PS DUR 18+
5	1	3WIN672101	A	BARRIER WING, UPPER DS DUR 18+
6	1	4WIK672100	A	BARRIER WING KIT DUR 21
6.1	16	3X05A	ANY	1/4-20 X 7/8 PHIL TRUSS HD MS
6.2	6	3X16	ANY	1/4-20 HEX WHIZ NUT - BLACK

