

INSTALLATION GUIDE
4PBK5615 PUSH BUMPER
HARDWARE KIT
2015 - DODGE CHARGER

Pro-gard[™]
PRODUCTS LLC.

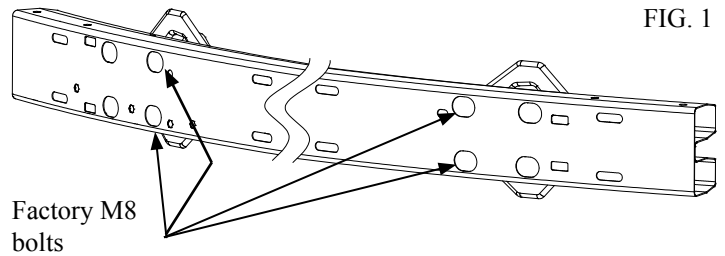
STRONG | RELIABLE | SECURE

pro-gard.com
800.480.6680

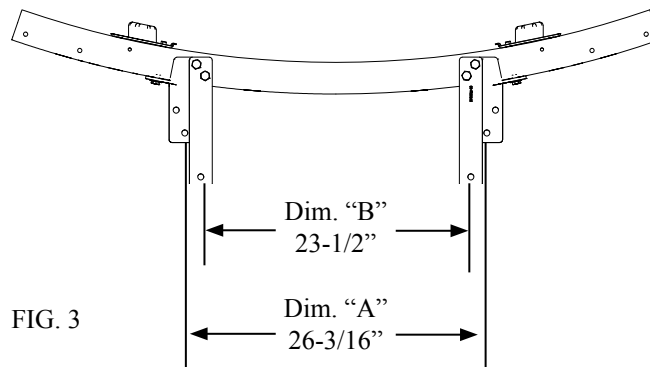
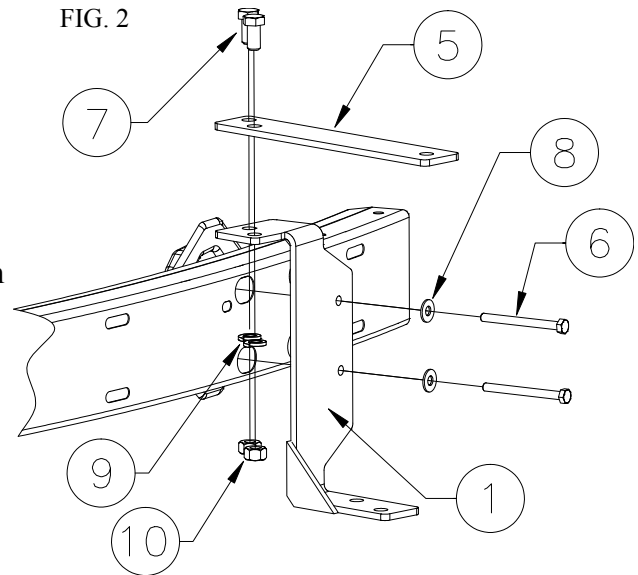
THESE COMPONENTS ARE REQUIRED
TO ASSEMBLE THE PRO-GARD PUSH BUMPER HARDWARE KIT

- I. You will need the following tools:
- a. Ratchet with 13mm Socket
 - b. 3/4" Socket
 - c. 3/4" open or box end wrench
 - d. Phillips screw driver
- II. Please be sure to read all instructions before installation and do not fully tighten any of the bolts until all bolts have been hand started

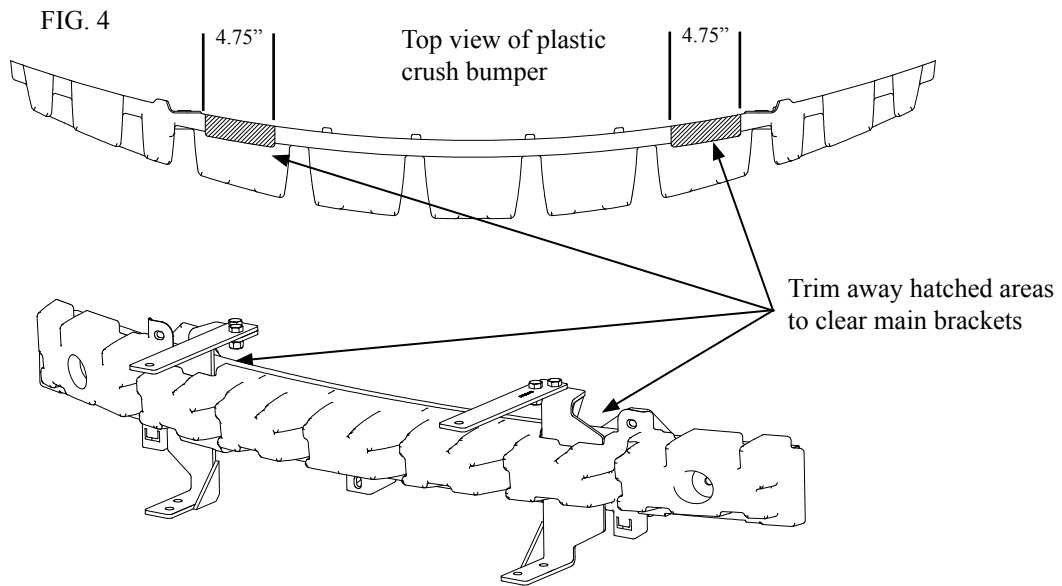
1. Remove the vehicle's front fascia to expose the crush bumper. Remove the two (2) inner most factory M8 bolts from the bumper on each side, four (4) total. See Fig. 1



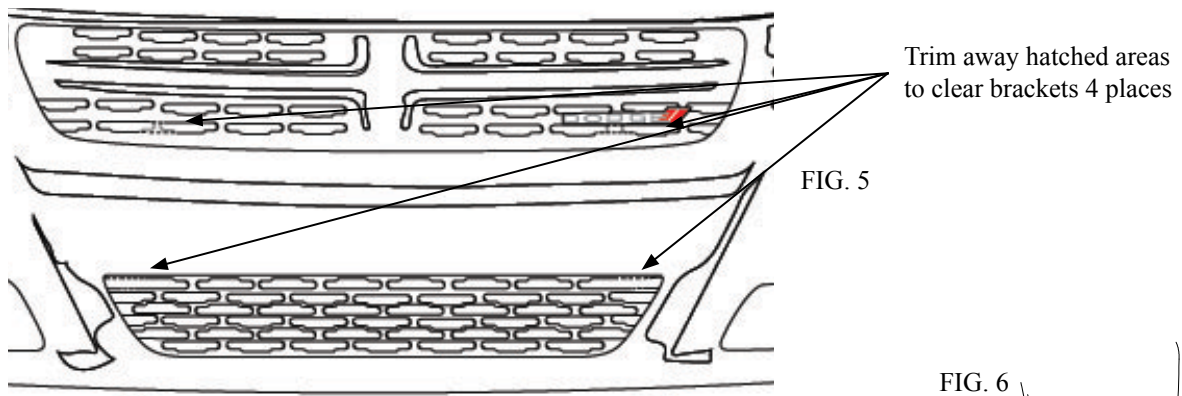
2. Using provided M8 bolts (6) and 3/8" flat washers (8), install main bracket (1) on driver side of car. See Fig. 2
Leave bolts finger tight.
Repeat for passenger side using bracket (3).
3. Refer to Fig. 3, dimension "A" and tighten main bracket bolts.
4. Install the upper brackets (5), using 1/2-13 x 1" bolt (7), 1/2" split ring washer (9) and 1/2-13 nut (10). See Fig. 2
5. Refer to Fig. 3, dimension "B" and tighten upper brackets.



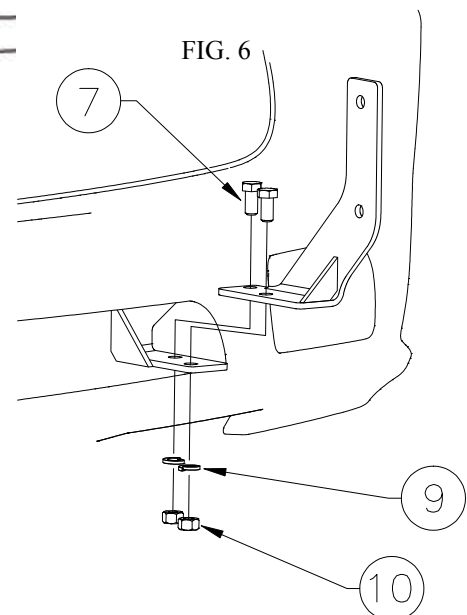
- Remove the vehicle's plastic crush bumper from the fascia. Trim to fit per Fig. 4.



- Reassemble the plastic crush bumper to the fascia. Place the fascia to the front of the vehicle and mark where the upper and lower brackets extend through the grill. Cut the grill to clear the brackets. See Fig. 5.

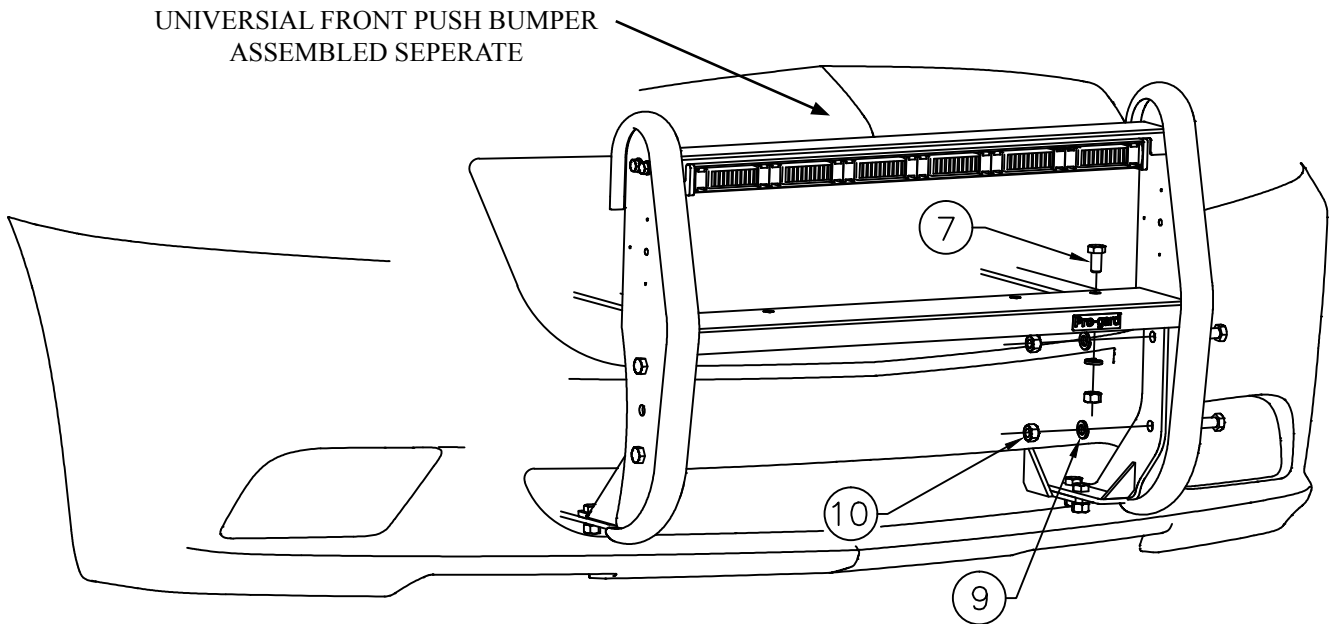


- Reassemble the fascia to the vehicle.
- Install the lower bracket (2) on driver side of car, using 1/2-13 x 1" bolt (7), 1/2" split ring washer (9) and 1/2-13 nut (10). See Fig. 6
- Repeat for passenger side using bracket (4).



10. Follow assembly instructions included with push bumper and assemble push bumper.
11. Install push bumper to the vehicle, using 1/2-13 x 1" bolt (7), 1/2" split ring washer (10) and 1/2-13 nut (9). See Fig. 7

FIG. 7



FABRICATED PARTS LIST			
ITEM	QTY	PART NUMBER	DESCRIPTION
1	1	3PBK5615-01D	MAIN BRACKET DRIVER SIDE
2	1	3PBK5615-02D	LOWER BRACKET DRIVER SIDE
3	1	3PBK5615-01P	MAIN BRACKET PASSENGER SIDE
4	1	3PBK5615-02P	LOWER BRACKET PASSENGER SIDE
5	2	3PB5611-03	UPPER BRACKET
6	1	XXXXX	SEDAN PUSH BUMPER (PART NUMBER VARIES)

FASTENER LIST			
ITEM	QTY	PART NUMBER	DESCRIPTION
7	4	3X196	M8-1.25x90mm HEX CAP SCREW ZINC
8	14	3X174	1/2-13 x 1" HHCS, GR8, Blk Zn/C
9	14	3X175	1/2" WSHR Split Lock, Blk Zn/C
10	14	3X176	1/2-13 NUT, GR8, Blk Zn/C
11	4	3X113	3/8" WASHER
12	4	3X12	1/4 FLAT WASHER, BLACK

2015 Dodge Charger Mounting Kit Assembly

