

INSTALLATION GUIDE

4OSBK4713

2013-2019

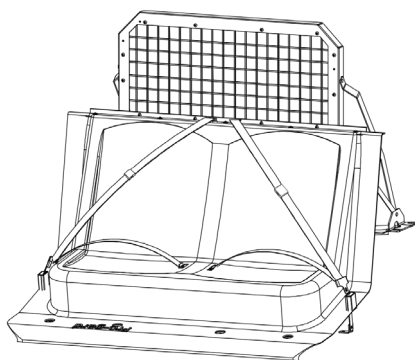
FORD INTECEPTOR UTILITY

OUTBOARD SEAT BELTS

Pro-gardTM
PRODUCTS LLC.

STRONG. RELIABLE. SECURE.

THESE COMPONENTS ARE REQUIRED
TO INSTALL THE OSB SEAT BELT



Outboard Seatbelt System

Part # 4OSBK4713

This system requires the barrier
& transport seat to be installed.



Part # 4OSBHK4713

I. The following tools will be required to complete the installation.

- | | | |
|-------------------------|----------------------|----------------|
| A. 7/16 Socket | E. 9/16 Socket | I. 3/4 Socket |
| B. 15mm Socket | F. T-45 Torx Bit | J. Power Drill |
| C. Phillips Screwdriver | G. 5/32 Allen Wrench | K. 1/4" Bit |
| D. 11/16 Socket | H. 3/8 Socket | |

II. Read all instructions carefully and refer to the last page BOM to ensure all parts were received.

NOTE:

The standard transport seat can be upgraded with the Outboard Seat Belt System by ordering the 4OSBK4713 kit. Remove the standard seat, upper seat support bar, and seat belt brackets from the vehicle and proceed by following the instructions and complete the OSB installation.

CAUTION:

The Utility barrier must be installed before the Outboard Seat Belt System. Before installing the barrier, substitute brackets 3OSB4715-02D & P in the OSB kit for brackets 3B4713-02D & P in the barrier kit.

III. Seatbelt Support Bracket & Cross Bar Installation.

- A. After the barrier has been completely installed, then proceed by attaching the (3OSB4715-07) lower and (3OSB4715-01) upper support bars. (As shown in Fig. 1) Use the two (3X114) 3/8 bolts and (3X170) nuts secure the support bars together.
- B. Remove 4 screws at bottom window opening and replace with Use 3X61 screws to hold the outboard seat belt cross bar to the barrier. Next, the (3OSB4715-05) seat belt bracket will get sandwiched between the support bar and x-member threaded studs.

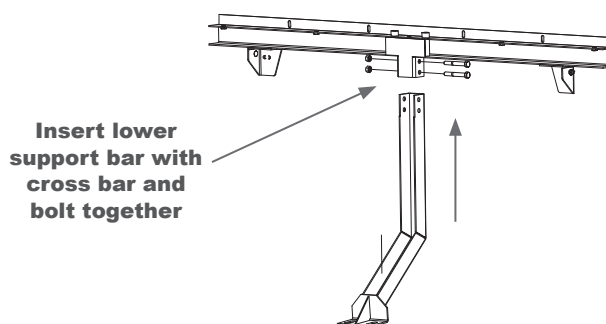


Fig. 1

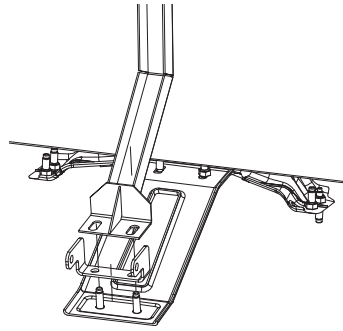


Fig. 2

Remove the OEM nuts on the threaded studs attached to the x-member and insert the support bar into the vehicle and bolt to the barrier as shown in Fig. 2 and Fig. 3. Place OEM nuts back onto the threaded studs and secure tightly.

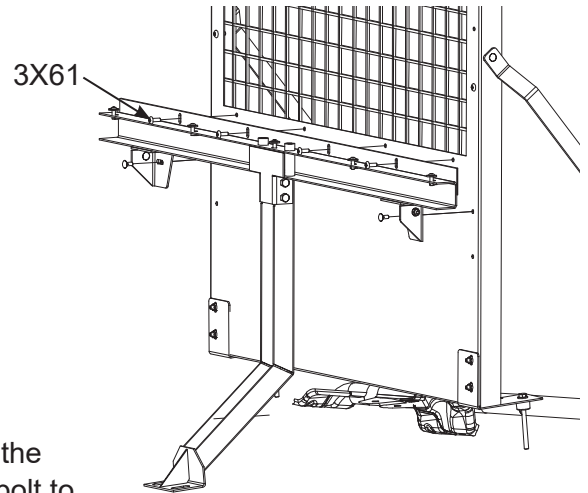


Fig. 3

C. Next, place the two (3OSB4715-04) bottom foot brackets at the lower section of either end of the barrier. The two nuts previously installed will need to be removed and reinstalled with the foot brackets on each side. (See Fig. 4)

D. Now the (3OSB4715-03) barrier support brackets can be attached to the cross bar and barrier. The (3X16Z) nuts in the rear cargo

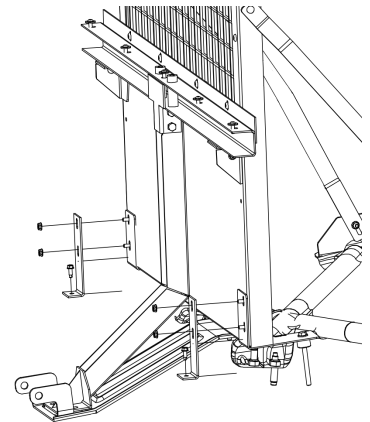


Fig. 4

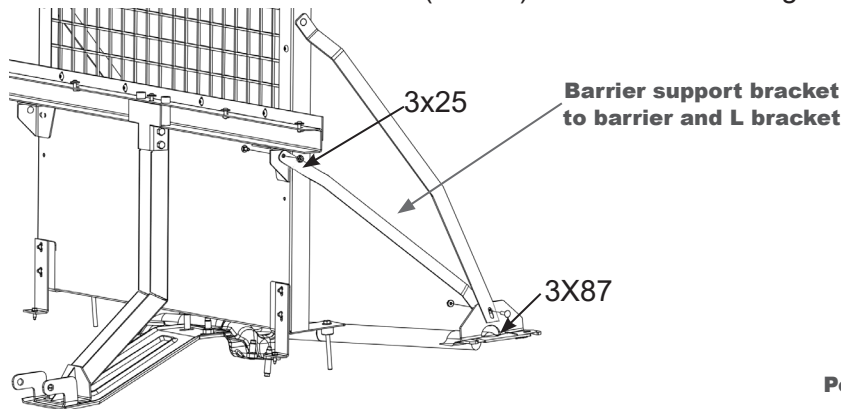


Fig. 5

area can be removed and the support bracket installed with bolts at the lower cargo area and upper barrier holes. (See Fig. 5)

Position the manual Adjusters here

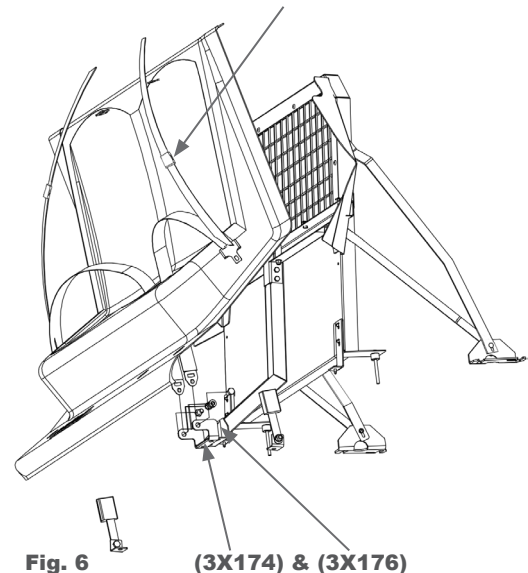


Fig. 6

IV. Seat and Seat Belt Installation.

A. First, flip the (3S47UINT13) transport seat upside down and cut out the marked, seat belt areas on the sides for installation. Then install the (3OSB109RP) lower seat belt buckles on the passenger and driver sides. Use the (3OSB4715-06) buckle L-brackets and (3X174 & 3X176) bolts & nuts to fasten these to the original OEM belt

locations at the lower part of the C-pillars. (See Fig. 6 or 7) Tuck the OEM belts behind the trim to hide.

B. Next, place the seat in the vehicle loosely and pull the (3OSB001) seat belts through the holes in the seat to the (3OSB4715-05) mounting brackets. Be sure to feed the (3S5001) rubber grommet through the seat belt on the top side. Place bolts through the seat belt mounting points to see how they line up with the seat. Quickly test the seat belts and do any adjustments needed before bolting in place.

C. The seat belts are mounted in two places by the supplied bolts. One mounting point is in the center of the vehicle coming off of the seat belt bracket attached to the x-member. The other is at the top of the cross bar where the stand offs are located. Once the seat belt is fastened to these locations then the seat can be secured in place. Make sure the belt pull straps go down across the chest when installed.

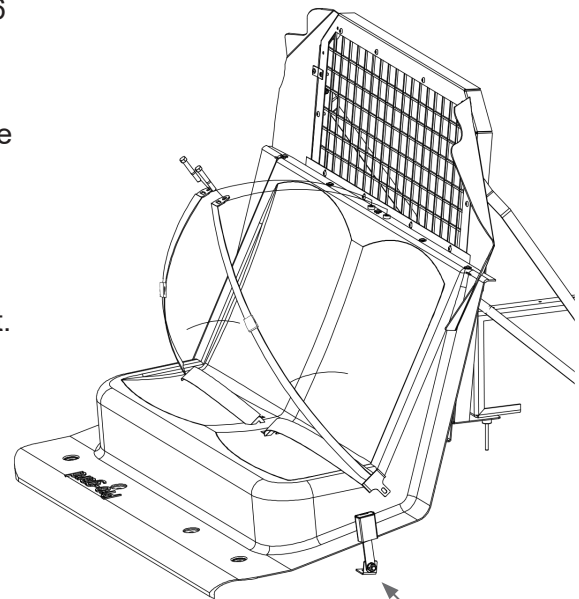


Fig. 7

Buckle L bracket bolts to OEM belt locations using OEM fasteners

D. The seat is secured by using the (3X223) 5 bolts and (3X12) washers at the top of the seat and the (3X222) 4 bolts and (3X224) washers at the floor of the seat.

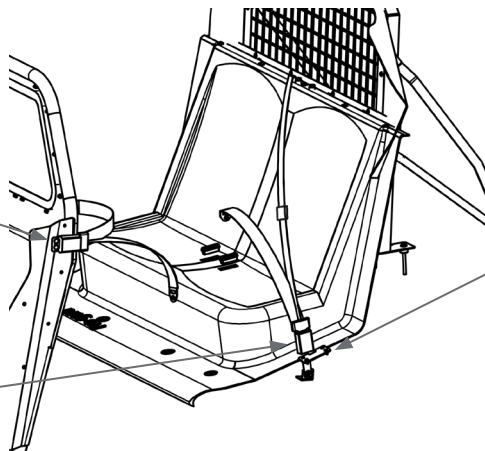
E. Locate partition buckle on the partition, ensuring the end of the buckle does not protrude past the partition into the prisoner area to avoid a catch point. Drill two 1/4" holes one at each end of the buckle's slotted mounting tab, and attach with the provided fasteners. This allows the seat belt to be placed in the open position. The open seat belt position allows the user easy access while loading passengers in the back seats. The seat belt needs to be fastened in the closed position when transporting passengers by using the (3OSB109RP) lower buckle just below the C-pillar area. Bolt the small black trim panel (3OSB4715-11) in place next aligned with the seat belt as shown to fill the gap. (See Fig. 8)

Installation complete!

If you have any problems with this installation then call the toll free number (800-480-6680) and ask for technical assistance.

The open position is when the belt is attached to the partition buckle and is for easy loading of passengers.

The closed position uses the lower buckle and secures the passenger for transport.



secure the trim panel aligned to the buckle using the provided black sheet metal screws.

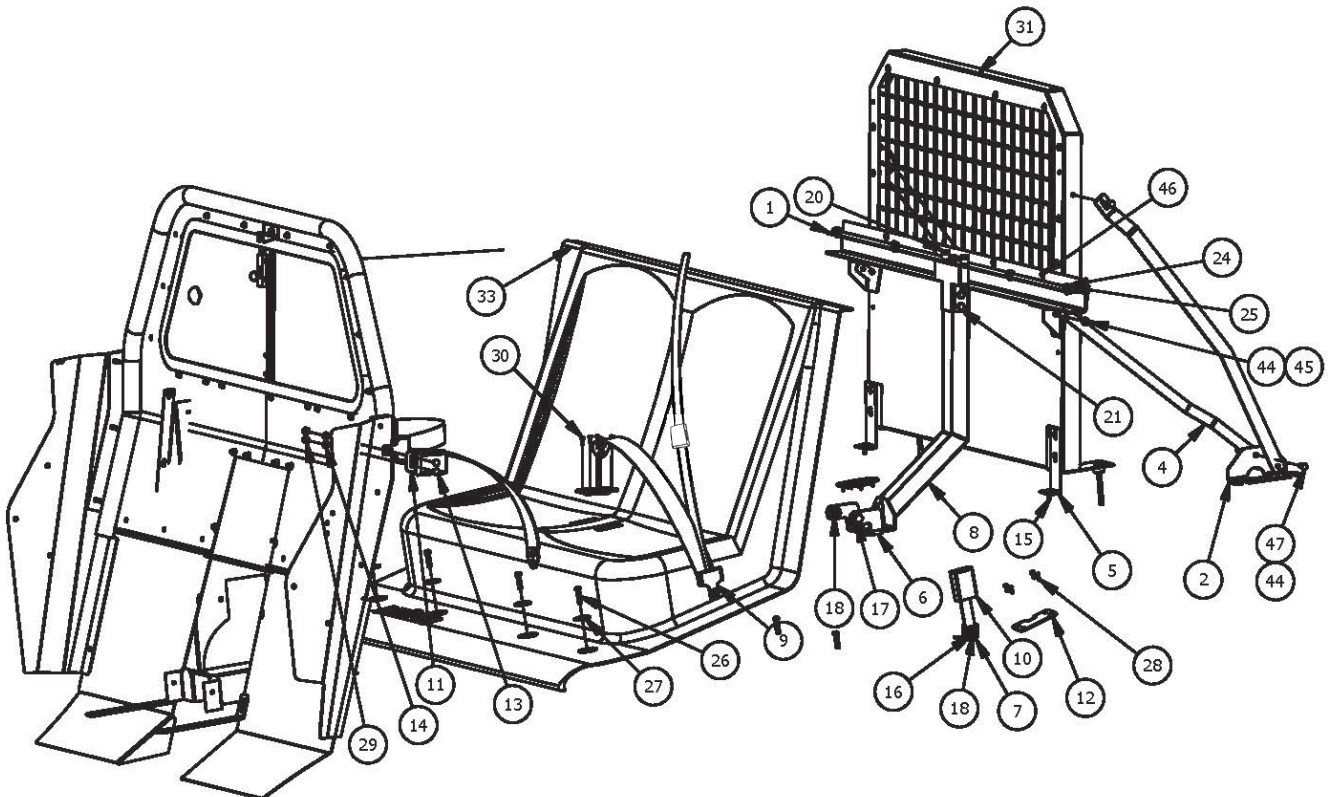
Fig. 8

Ford Utility BOM Diagram

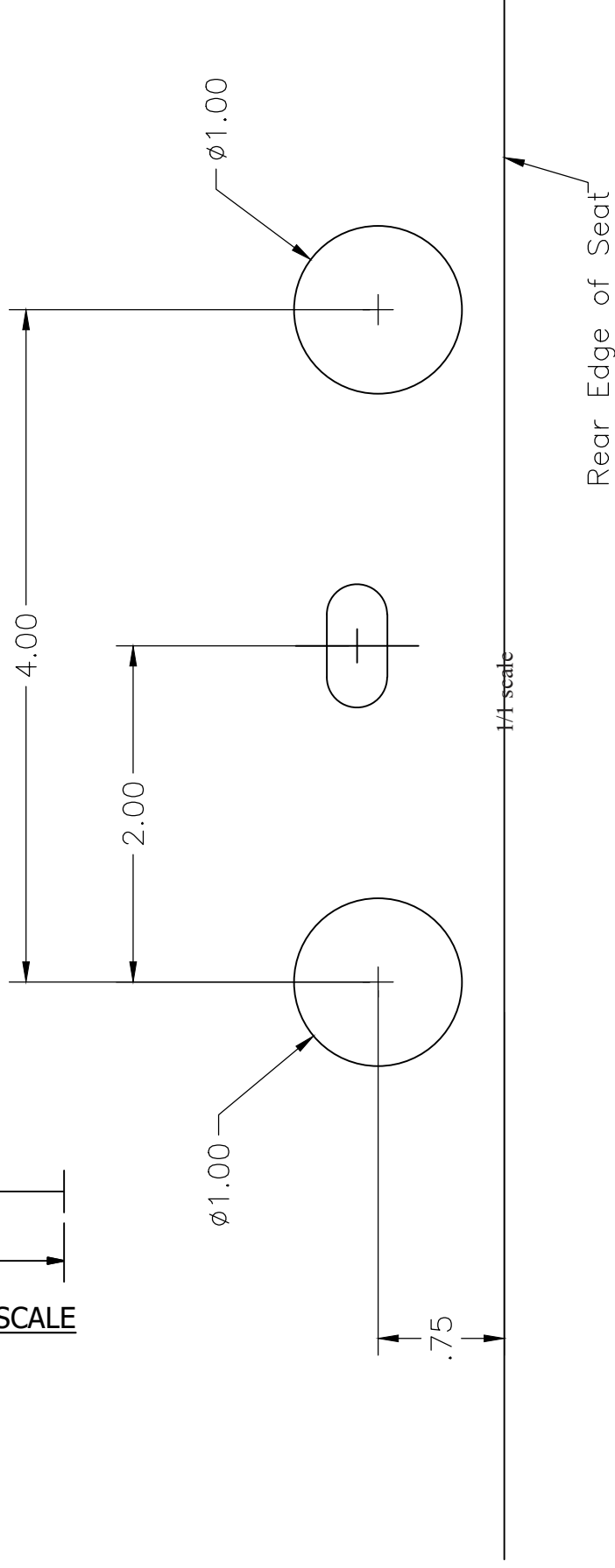
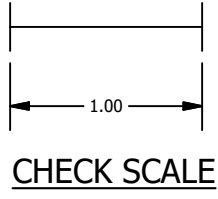
FABRICATED PARTS LIST			
ITEM	QTY	PART NUMBER	DESCRIPTION
1	1	3OSB4715-01	MAIN WELDMENT UPPER
2	1	3OSB4715-02D	DRIVER REAR L BRACKET
3	1	3OSB4715-02P	PASSENGER REAR L BRACKET
4	2	3OSB4715-03	BARRIER SUPPORT BRACKET
5	2	3OSB4715-04	FOOT BRACKET
6	1	3OSB4715-05	SEATBELT HOLDER
7	2	3OSB4715-06	SIDE L BRACKET
8	1	3OSB4715-07	MAIN WELDMENT LOWER
9	2	3OSB001	SEAT BELTS
10	2	3OSB109RP	LOWER BUCKLE
11	2	3OSB:3OSB109RP-1	PARTITION BUCKLE
12	2	3OSB4715-11	COVER, SEAT CUTOUT

ADDITIONAL REQUIRED PARTS LIST			
ITEM	QTY	PART NUMBER	DESCRIPTION
31	1	XXXXX (MAY VARY)	BARRIER </td
32	1	4OSBK4713	OSB KIT
33	1	3S47UINT13	TRANSPORT SEAT
34	1	4B4713UINT	BARRIER KIT

FASTENER LIST			
ITEM	QTY	PART NUMBER	DESCRIPTION
13	2	3X36	1/4-20 X 5/8 CARRIAGE BOLT
14	6	3X16Z	1/4-20 WHIZ NUT
15	2	3X16Z	#14 x 3/4" SELF DRILLING HEX HEAD SCREW
16	4	3X175	1/2" WSHR Split Lock, Blk Zn/C
17	4	3X174	1/2-13 x 1" HHCS, GR8, Blk Zn/C
18	4	3X176	1/2-13 NUT, GR8, Blk Zn/C
19	2	3X170	3/8-16 Hex Nut (NOT SHOWN)
20	2	3X245	7/16-20X3 HEX CAP SC GR8 PLTD
21	2	3X114	3/8-16 X 2.75, HEX CAP SCREWS, GR 8, YZ
22	2	3X06	1/4-20 X 3/4" PHIL HEAD SCREW
23	2	3S5003	TRANSPORT SEAT BEZEL
24	5	3X223	1/4-20 X 1 BUT HD SCR BLK Z CR 3
25	5	3X12	1/4" FLAT WASHER, BLACK
26	4	3X222	M10-1.5 X 35mm BSCS, BLACK
27	4	3X224	3/8 x 1 1/2 Washer
28	8	3X143	#10-24 X 5/8 PHILTRUSS HD
29	4	3X145	BLACK PLASTIC CAPS
30	10	3X72	8-32 X 5/8 PHIL PAN HD MS
44	4	3X166	5/16-18 LARGE HEX WHIZ NUT-ZINC
45	2	3X25	5/16-18 X 1/2 HEX HD CAP SCREW
46	4	3X61	1/4-20 X 3/4 CARRIAGE BOLT
47	2	3X87	5/16-18 x 3/4" HHMS, Zn



2015 Utility Interceptor OSB Seat Top Holes Template



1. Locate the center slot on the top of the seat.
2. Align the template with the seat.
3. Mark and drill 1.00" holes as shown.