



**PRO-STRAINT RC1910**

**SAFE**  
**PROVEN**  
**DURABLE**

**PRO-STRAINT**  
**Detainee Safety Chair**

Providing law enforcement and medical personnel with an option to physically restrain individuals who may be impaired, violent, or otherwise uncontrollable such that they pose a risk to themselves or others.



# 8 POINTS OF RESTRAINT

provide varying degrees of restraint to accommodate numerous situations



The Pro-Straint Detainee Safety Chair offers trained law enforcement and medical personnel with multiple options to select the appropriate level of restraint for the individual and the circumstances based on their professional judgment.

- |                         |                      |
|-------------------------|----------------------|
| <b>1 LAP BELT</b>       | <b>5 LEFT WRIST</b>  |
| <b>2 RIGHT SHOULDER</b> | <b>6 RIGHT ANKLE</b> |
| <b>3 LEFT SHOULDER</b>  | <b>7 LEFT ANKLE</b>  |
| <b>4 RIGHT WRIST</b>    | <b>8 BOTH LEGS</b>   |

Listed in no particular order. Please follow your departmental guidelines.



# RESTRAINT LEVELS

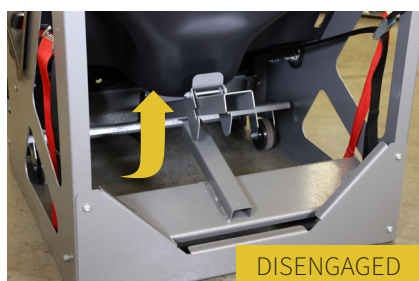
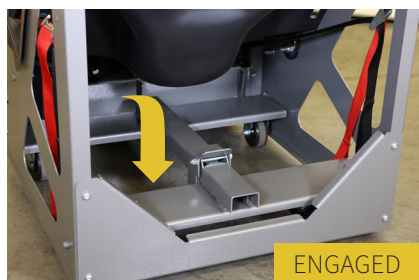
Utilizing Rear Cam Buckle Adjustments on Wrists and Ankles

Works with soft and hard restraints.

- 1 NO RANGE OF MOTION**
- 2 PARTIAL RANGE OF MOTION**
- 3 FULL RANGE OF MOTION**

## ADDED CIRCULATION

At last, a way to exercise or medicate a detainee without them leaving the restraint chair. They can feed themselves while under full control of a monitoring officer. An ergonomic “pocket” for each leg provides greater control without sacrificing overall circulation. Well suited for the violent, mentally disturbed, or substance influenced detainee, offering increased control and safety.



## MOVING DETAINEES

Utilizing Rear Step and Casters



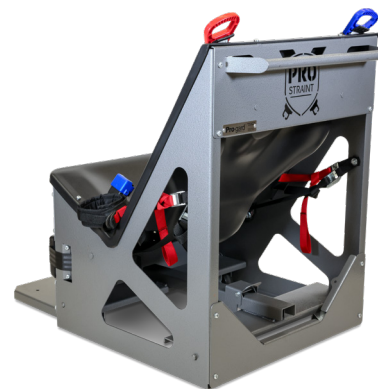
Transition from stationary to mobile with one step to allow for safe transport



Lifted chair has 360° rotation on casters (easily supports weights of over 500 lbs)



Heavy, solid steel frame with a low center of gravity for stability





**MADE IN  
USA**



## THE PRO-STRAINT Difference

- Varying degrees of restraint available to accommodate numerous situations
- Heavy, solid steel frame with a low center of gravity for steadiness
- One-step lifting mechanism that raises the chair with 3/4" wheel clearance and enables the use of casters with 360° rotation to facilitate movement while maintaining stability
- Belt restraint system with patented handles give maximum grip when buckling
- Optional metal handcuff restraint accessory that can be tethered to the chair for additional security
- Delivers completely assembled and ready for use

## FEATURES at a Glance

- **Rear-mounted cam buckles offer flexibility for adjusting and securing wrist and ankle restraints**
- **Retractable belts**
- **Tamper-resistant buckles**
- **Durable and easy-to-clean molded thermoplastic polyolefin seat**
- **Removable back pad allows accommodation for most handcuffed detainees**
- **Ankle cinch strap for tailored range of motion**



optional  
**HARD RESTRAINT SYSTEM**  
provides an additional level  
of security

**Pro-gard Products**  
9650 East 148<sup>th</sup> Street  
Noblesville, IN 46060

**P 800.480.6680**  
**sales@pro-gard.com**  
pro-gard.com

