



Retractable OSB's shown with the VIPER™ Shield Enhanced Space Saver Partitions in the 2020 Ford Police Interceptor Utility

PRISONER TRANSPORT

OUTBOARD SEAT BELTS

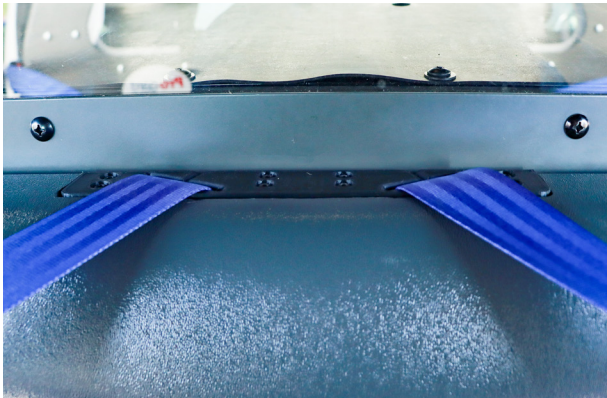
Retractable & Manual

Pro-gard[™]
PRODUCTS LLC.

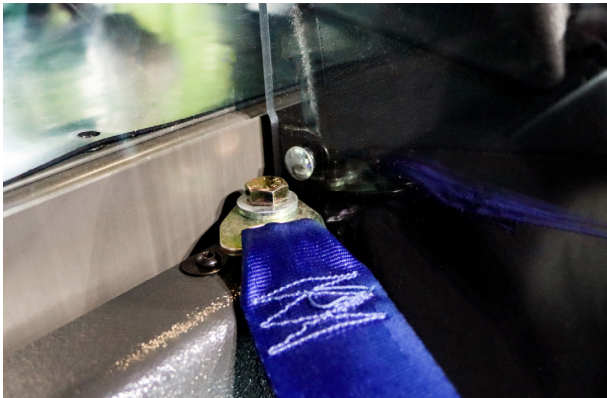
OUTBOARD SEAT BELTS



Retractable OSB's shown in the 2020 Ford Police Interceptor Utility



Retractable OSB's shown in the 2020 Ford Police Interceptor Utility



Manual OSB's in the 2020 Ford Police Interceptor Utility

Having to reach across a prisoner to secure them for transport can present unpleasant and unsafe situations for officers. The Pro-gard Outboard Seatbelt comes in two options, retractable or manual. The highly visible blue Outboard Seat Belts create a safer alternative by moving the belt buckles from the seat center to the exterior side of the vehicle.

OUTBOARD SEAT BELT FEATURES

Retractable



Manual



Provides Officer Safety

- » Eliminates officer's need to reach across the prisoner to secure the OEM seat belt buckle
- » Minimize engagement with prisoners and unpleasant bio-hazard situations
- » Duty gear is less vulnerable/accessible

Out of the Way Location

- » Two female buckles: stored position is located out of the way on partition to keep prisoner disentangled when loading and unloading, lock position is at lap level for securing prisoner for transport
- » Stored buckle fits between door and partition's exterior side when door is closed
- » Locked buckle fits between door and seat's exterior side when door is closed

Highly Visible

- » The bright "Pro-gard Blue" straps provide a high contrast with gray seats and partitions for better success when initially loading prisoner for transport

Easy Strap Adjustment

- » Satin weave of straps makes adjusting straps around prisoner quick and easy

Retrofit Kits Available

- » Designed to work exclusively with Pro-gard's current Prisoner Transport Seats

*Not available for all vehicles contact customer service for availability.